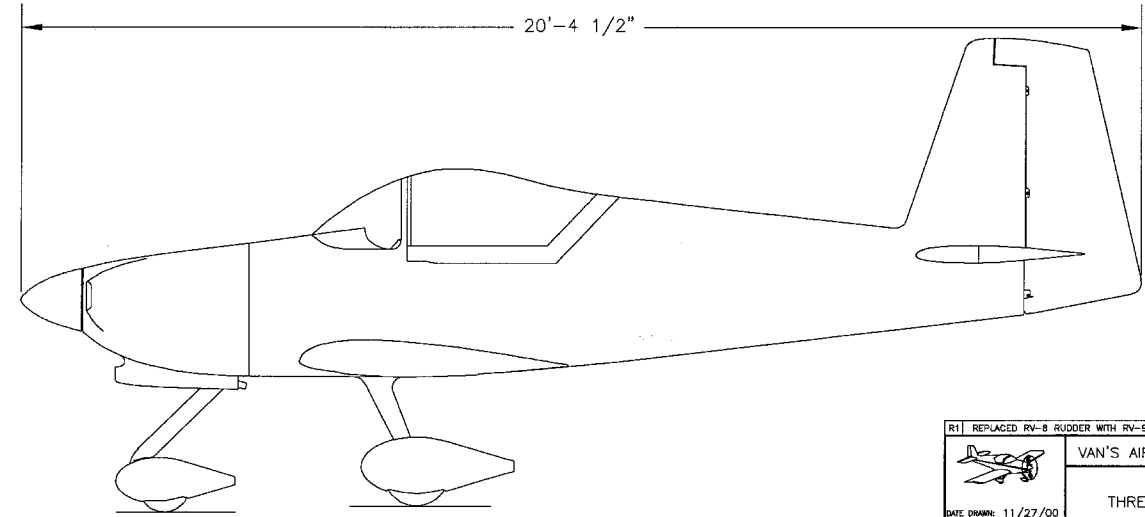
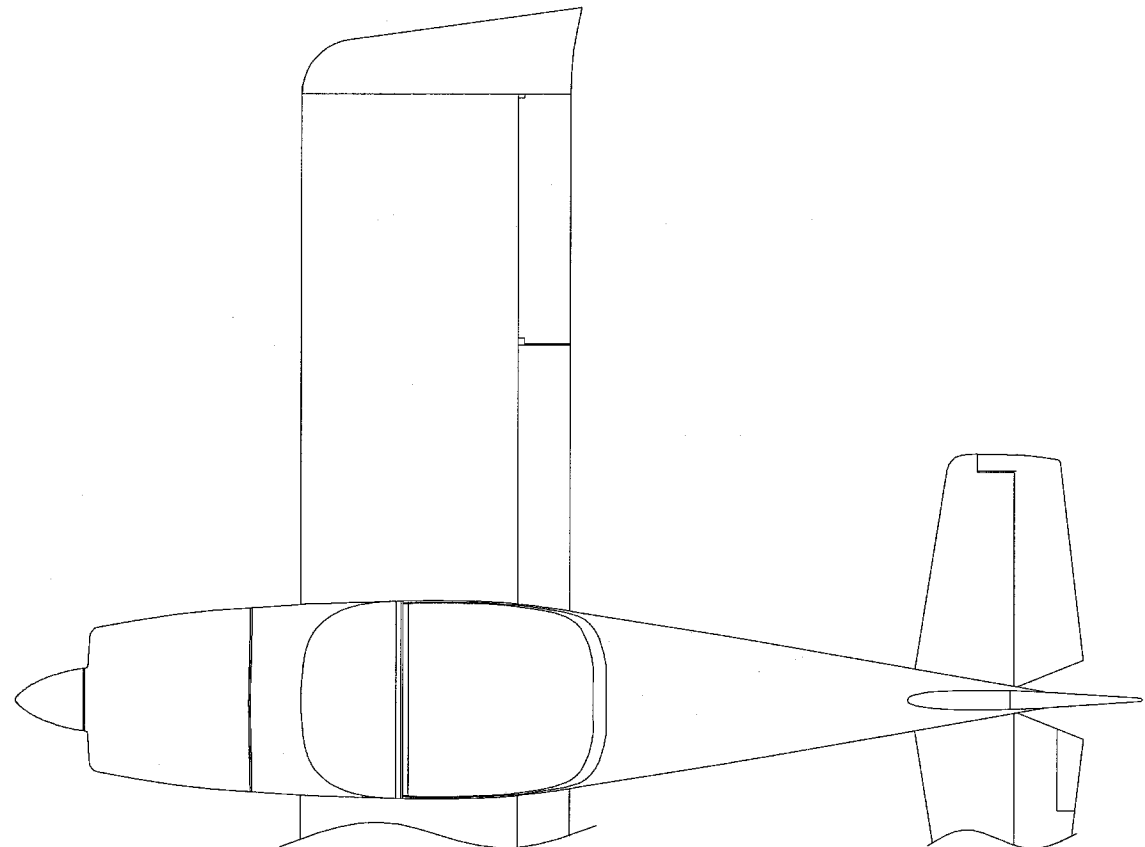
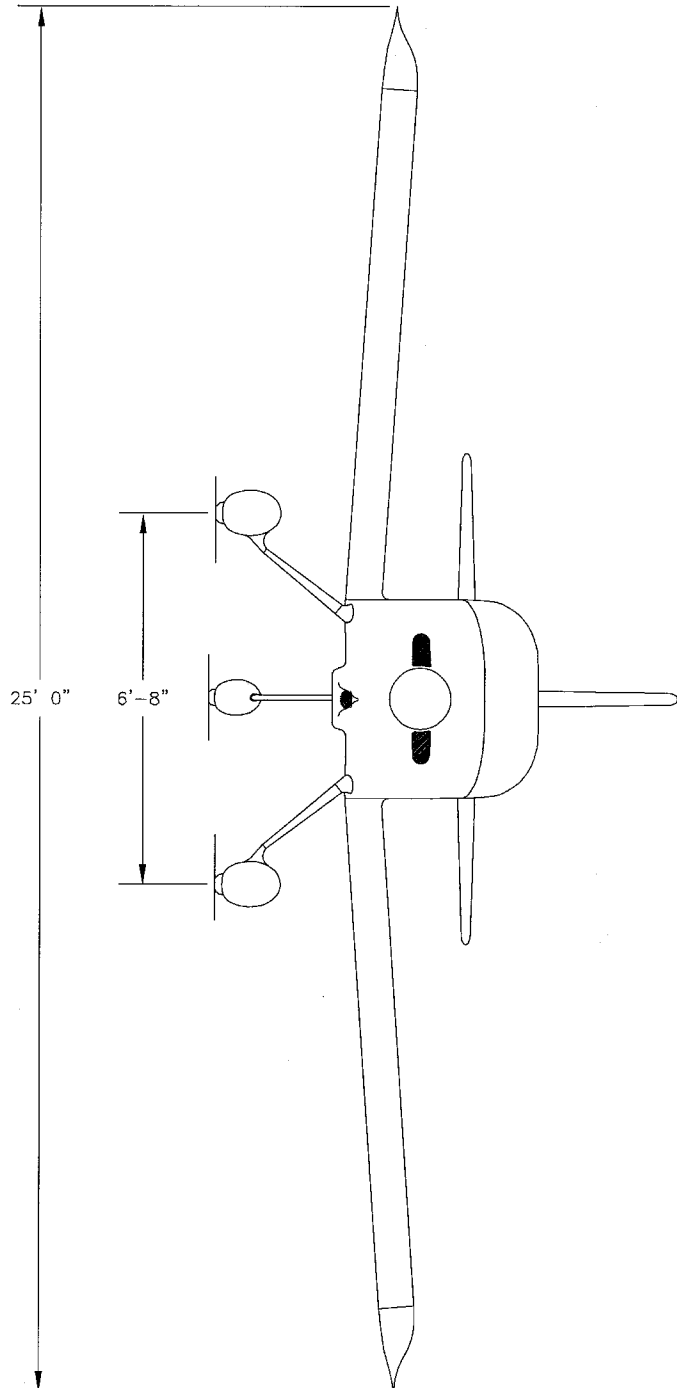
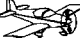


R1   REPLACED RV-8 RUDDER WITH RV-9 RUDDER 5/20/02		14401 NE KELLY RD ALBANY, OR 97002 USA	
VAN'S AIRCRAFT, INC.		RV-7	
RV-7		THREE VIEW DRAWING	
DATE DRAWN 11/27/00	UNITS: INCHES	RV-7	
DESIGN BY: RAN JOHNSON	TOLERANCES: NONE	SCALE: 1/16	D-SIZE ORIGINAL
UNLESS OTHERWISE SPECIFIED		PATH: \FILENAME F:\RV-7\2 OTHER\PLANS\RV07-01.DWG	
			DWG 1

1A

1A

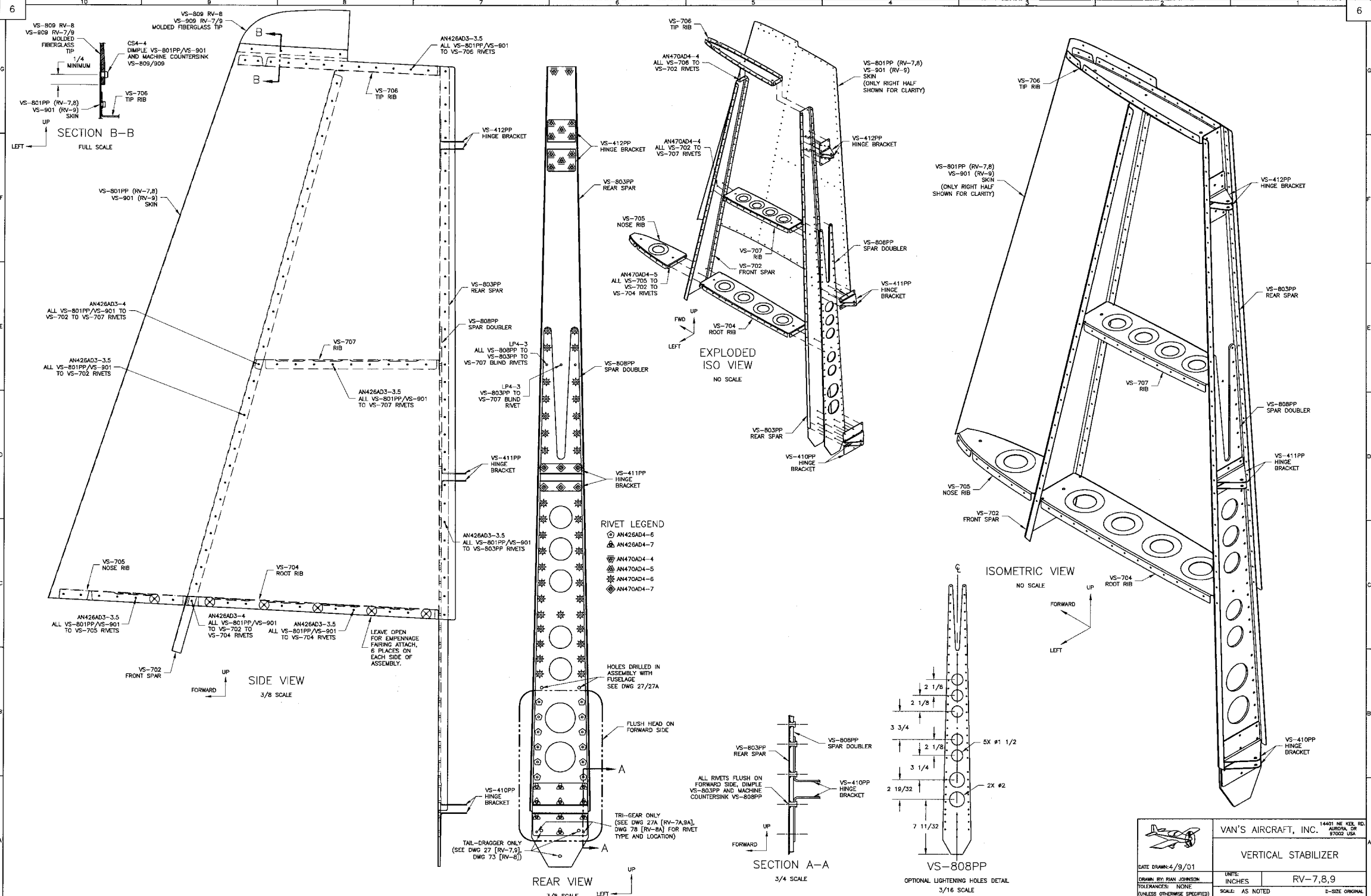


R1 REPLACED RV-8 RUDDER WITH RV-9 RUDDER. 5/20/02		14401 NE KEL RD. ABRAM, OR 97002 USA	
		VAN'S AIRCRAFT, INC.	
DATE DRAWN: 11/27/00		RV-7A	
DRAWN BY: RAY JOHNSON		THREE VIEW DRAWING	
TOLERANCES: NONE		UNITS: INCHES	RV-7A
(UNLESS OTHERWISE SPECIFIED)		SCALE: 1/14	D-SIZE ORIGINAL
PATH\FILENAME: F:\RV-7\2 OTHER PLANS\RV7-01A.DWG		DWG 1A	



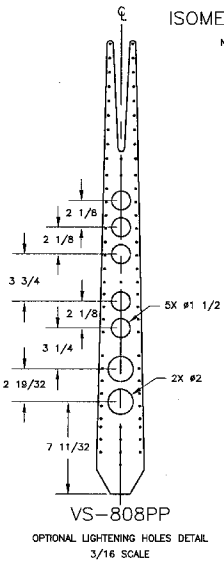
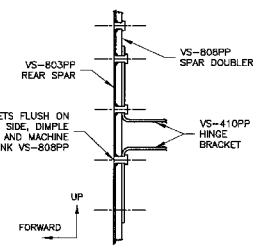






**RIVET LEGEND**

⊙	AN426AD4-6
⊙	AN426AD4-7
⊙	AN470AD4-4
⊙	AN470AD4-5
⊙	AN470AD4-6
⊙	AN470AD4-7



		VAN'S AIRCRAFT, INC. 14401 NE KEELE RD ALBANY, OR 97002, USA	
DATE DRAWN: 4/9/01		UNITS: INCHES	
DRAWN BY: RYAN JOHNSON		PART: RV-7,8,9	
TOLERANCES: NONE (UNLESS OTHERWISE SPECIFIED)		SCALE: AS NOTED	
PART FILE NAME: 01RV-7,8-01 OTHER PLANS: RV7,8,9-6.DWG		D-SIDE ORIGINAL	

